

Dear Patrician,

Greetings to you from Jaffna !

St. Patrick's is back on its wheel for the year 2009. The year 2008 had been an year of improvements and achievements in spite of many limitations, deprivations and thereafter the cyclone 'Nisha'.

We have completed the necessary renovations and begun the Academic Year.

I am pleased to forward to you the details of the Best Results of our students who sat the G.C.E(Advanced Level) Examination held in August last year.

I am also sending an analysis which we had to submit to the Department of Education.

Wishing you all the Best for 2008.

**ST. PATRICK'S COLLEGE, JAFFNA
G.C.E. (ADVANCED LEVEL) 2008**

BEST RESULTS

ARTS

R.F. ROSHAN	3A
X. JUSTIN RAJ	3A
C. BENAT SINGER	3A
S. AJANTHAN	3A
S. FERDINANT	3A
J. ANTONYS	3A
A. NIROJITH	3A
K. KABILTHAS	3A
S.AJITH	2AB
J.A. JUDE PRATHEEPAN	2AB
G. JOY RAJMAN	2AB
A. SAHAYANATHAN	2AC
J. KAJENDRAN	A2B
S.A. SULAXAN	A2B
R. JUDIPS CAMARAN	A2B
V. SANJOY DIRON	A2B
G. NIROJAN	A2B
A.M. CHARLES ANTONY	A2B

A. MARINE SUTHARSON	ABC
A.P. GLADSAN	ABC
R. VIMALRAJ	ABC

COMMERCE

S. NARESH	3A
C. NITHIANANTHAN	ABC
JULI KEASHER	2AC

SCIENCE

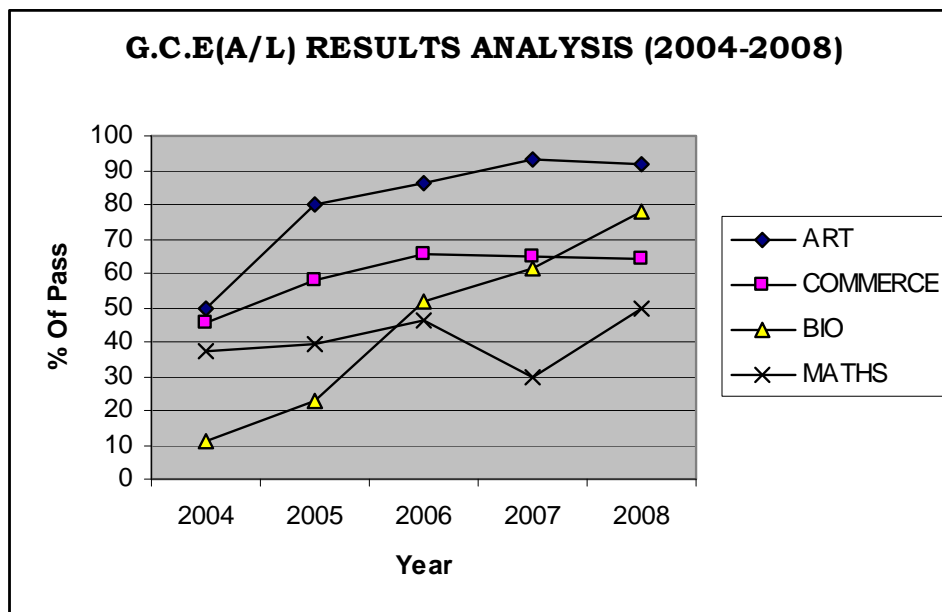
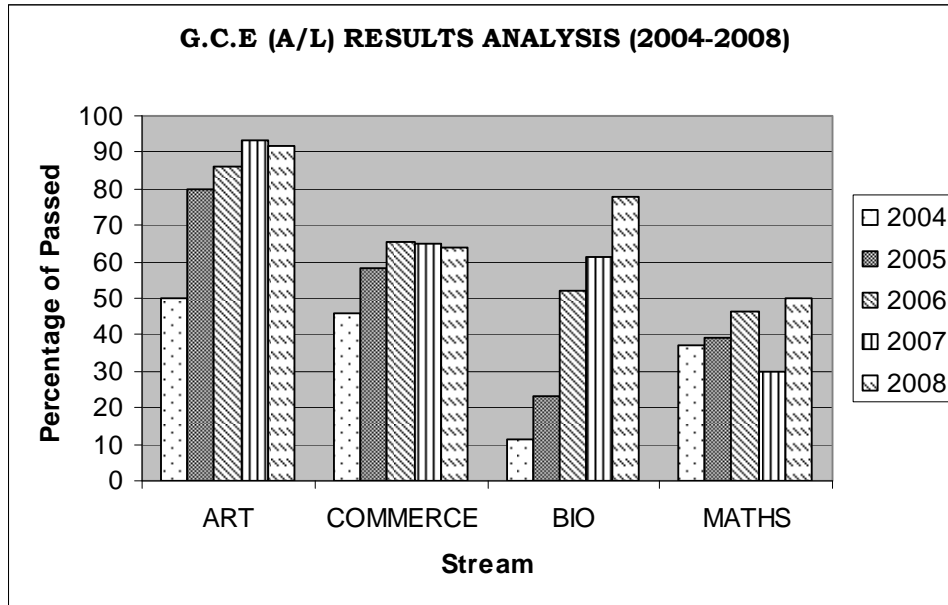
S.A. JOSEPH	2AB
A. JOY DANICIAUS	2AC
R. AHALYAN	2BC
R. RAJ RENUCIUS	A2B
DAYASWARAN	A2B

MATHS

THELEPAN REMIN	A2B
J. ROSHAN	ABC

G.C.E (A/L) RESULTS ANALYSIS (STREAM WISE) 2004-2008

Stream	2004			2005			2006			2007			2008		
	No. Sat	No. Passed	% of Passes	No. Sat	No. Passed	% of Passes	No. Sat	No. Passed	% of Passes	No. Sat	No. Passed	% of Passes	No. Sat	No. Passed	% of Passes
ARTS	30	15	50	55	44	80	46	40	86.26	44	41	93.18	49	45	91.83
COMMERCE	35	16	45.71	50	29	58	61	40	65.57	40	26	65	39	25	64.1
BIO	18	2	11.11	13	3	23.08	27	14	51.85	26	16	61.54	27	21	77.78
MATHS	43	16	37.21	33	13	39.39	43	20	46.51	30	9	30	24	12	50



Rector
Rev.Fr.M. Jero Selvanayagam